

Est. 1974

THE BUS DUCT EXPERTS



Electrical Builders, Inc.



ELECTRICAL BUILDERS, INC.

877-297-0616 | ElectricalBuilders.com

WHO WE ARE

EBI IS YOUR TRUSTED PARTNER PROVIDING FULL SERVICE, TURNKEY SOLUTIONS FOR COMPLEX MEDIUM AND HIGH VOLTAGE ELECTRICAL SYSTEM PROJECTS.





WHY WE ARE THE EXPERTS

WITH OVER 50 YEARS
DEDICATED TO SERVING
POWER GENERATION
FACILITIES, EBI IS THE
NATION'S PREMIER
SPECIALTY ELECTRICAL
& WELDING CONTRACTOR
SPECIALIZING IN BUS DUCT
SERVICES & SOLUTIONS.

In 1974, Electrical Builders, Ind. (EBI), was born from humble Midwestern roots, specializing in mobile welding services. Today, EBI is a leading specialty electrical and welding contractor having completed over 4,100 projects across North America and beyond, including serving more than 75 percent of the United States nuclear power plant fleet.

EBI's expertise is in providing turnkey isolated phase, non-segregated, segregated, and cable bus services and solutions. Our experience with all brands of bus allows us to provide custom fabrication, emergent repairs, complete system refurbishments, and robust asset life extension solutions. Our clients include: utilities, substations, power plants, OEM's, industrial clients, and EPC's.

Working as your long-term partner, we approach each project from your perspective, taking ownership and investing time and resources early in project discussions. Our experienced and highly trained technicians will deliver the best solutions for asset optimization, always taking

into consideration what you have in place and what you want to accomplish. Our track record demonstrates our ability to get it right the first time. As a testament to this, we have never missed a project deadline and we are the only bus duct service and maintenance contractor that has never had a warranty claim.

Successful clients request EBI to join their planning teams, relying on our extensive bus duct technical expertise to guide them to an efficient, safe and cost-effective solution with unparalleled quality and customer service. We have worked on all types and designs of electrical bus duct, both current and obsolete, which allows us to provide unbiased, OEM independent insight and guide our clients to the best solution to meet their needs. We aim to exceed your expectations, ensuring peace of mind throughout every step of the project.



**CHOOSING A
REPUTABLE
CONTRACTOR
DETERMINES
WHEN YOU
GET BACK
ONLINE**

UNPLANNED OUTAGES ARE ON THE RISE

**IDENTIFYING THE RIGHT
PARTNER TO ASSESS,
PROACTIVELY MONITOR,
REPAIR, AND SERVICE YOUR
EQUIPMENT, IS CRITICAL TO
OPERATIONAL SUCCESS.**

TRANSFORMER CHANGE-OUTS

TURNKEY SOLUTIONS INCLUDE:

- GSU, AUX, ESS, GCB & CT Installation & Change-Outs
- PT/SA/VT Cubicle Installation & Change-Outs
- 24/7 Emergency Response
- Bus Duct Demolition, Removal & Re-Installation
- Replacement Termination Enclosures
- Replacement Adapter Bars & Flex Links
- Replacement Isolation GP03 / G10 & Hardware
- Contingency Planning
- Transformer Replacement
- Transformer Services
- Fabrication
- 3D Modeling





ISOLATED PHASE BUS DUCT

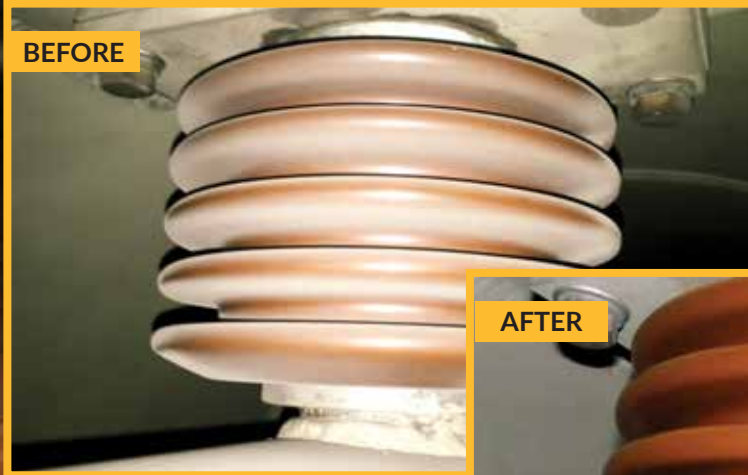
TURNKEY SOLUTIONS
INCLUDE:

- Fleet System Assessment & Planning
- Installation & Replacement
- Repairs & Refurbishment
- Rebuild & Fabrication (any OEM)
- Retrofits & Modifications
- Transformer Change-Outs
- Offline Inspection & Cryogenic Cleaning
- Offline Robotic Video & Borescope Inspection
- Online Continuous Monitoring Solutions
- Noninvasive System Diagnostics & Troubleshooting
- Aftermarket System Enhancements
- Dry Air Systems
- & Much More



**DO YOU KNOW
WHAT'S HIDING
IN YOUR IPB?**
INDUSTRY BEST PRACTICES
RECOMMEND
MAINTENANCE AT
A MINIMUM OF
EVERY 18-24 MONTHS

BEFORE



AFTER



CRYOGENIC CLEANING

EBI WAS THE FIRST ISOLATED PHASE BUS DUCT SERVICES CONTRACTOR TO DEVELOP AND INTRODUCE ENVIRONMENTALLY FRIENDLY CRYOGENIC CLEANING FOR INTERNAL IPB COMPONENTS. THIS PROCESS CLEANS MORE THAN JUST THE INSULATORS; IT THOROUGHLY CLEANS INSIDE THE ENTIRE LENGTH OF THE BUS DUCT SYSTEM, WHICH IS WHERE MANY ISSUES HIDE. CRYOGENIC CLEANING REMOVES DIRT, DEBRIS AND CONTAMINANTS WITHOUT LEAVING A RESIDUE OR DAMAGING EQUIPMENT.



NON-SEG BUS DUCT

TURNKEY SOLUTIONS
INCLUDE:

- Fleet System Assessment & Planning
- Installation & Replacement
- AUX Transformer Change-Outs
- Repairs & Refurbishment
- Rebuild & Fabrication (any OEM)
- Offline Inspection & Cleaning
- Online Continuous Monitoring Solutions
- Noninvasive System Diagnostics & Troubleshooting
- Aftermarket System Enhancements
- Heaters





CABLE BUS DUCT

TURNKEY SOLUTIONS
INCLUDE:

- Installation & Replacement
- Cable Tray Installation & Modification
- Testing & Terminating
- Support Steel Installation & Modification
- Repair/Troubleshooting
- Project Management
- FE/Planners



MOBILE R3 CONTINGENCY UNIT

CALL US FIRST IF YOU EXPERIENCE A MALFUNCTION OR FAILURE OF THE ISOPHASE, NON-SEG, SEG, OR CABLE BUS AT YOUR PLANT. WHETHER YOU NEED TO REPAIR, OR TO COMPLETELY REPLACE YOUR ELECTRICAL BUS DUCT SYSTEM, OUR R3 CONTINGENCY UNIT IS FULLY EQUIPPED TO HANDLE ALL OF YOUR BUS DUCT REPAIR AND FABRICATION NEEDS.



**24/7/365
EMERGENCY
SERVICES**

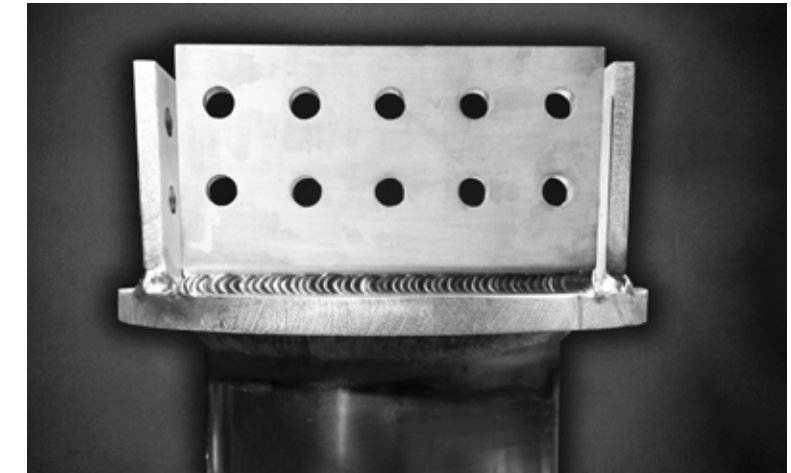
877-297-0616
urgent@electricalbuilders.com

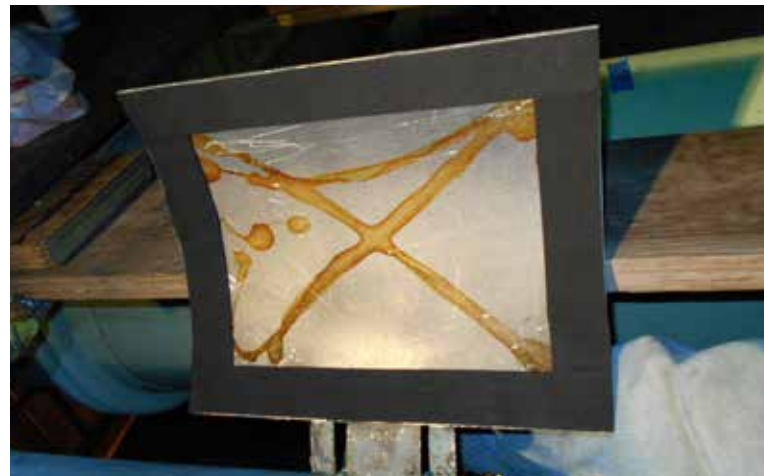


FABRICATION SERVICES

TURNKEY SOLUTIONS INCLUDE:

- Proprietary Welded Inspection Ports/
Bus Insulator Supports
- Bellows (Rubber or Aluminum)
- IPB Enclosures & Conductor Parts
- Terminations (Flexible Braided
Assemblies & Laminated Flexes)
- Wall & Ancillary Equipment Bushing
Seal-Off Replacements
- IPB Enclosure Expansion Joints
- Welded Conductor Shunt / Expansion
Assemblies
- Silver Plated Conductor Adapters
- Bonding Bars
- Design & Reverse Engineering
- 3D Modeling Capabilities
- Shorting Plate Assemblies

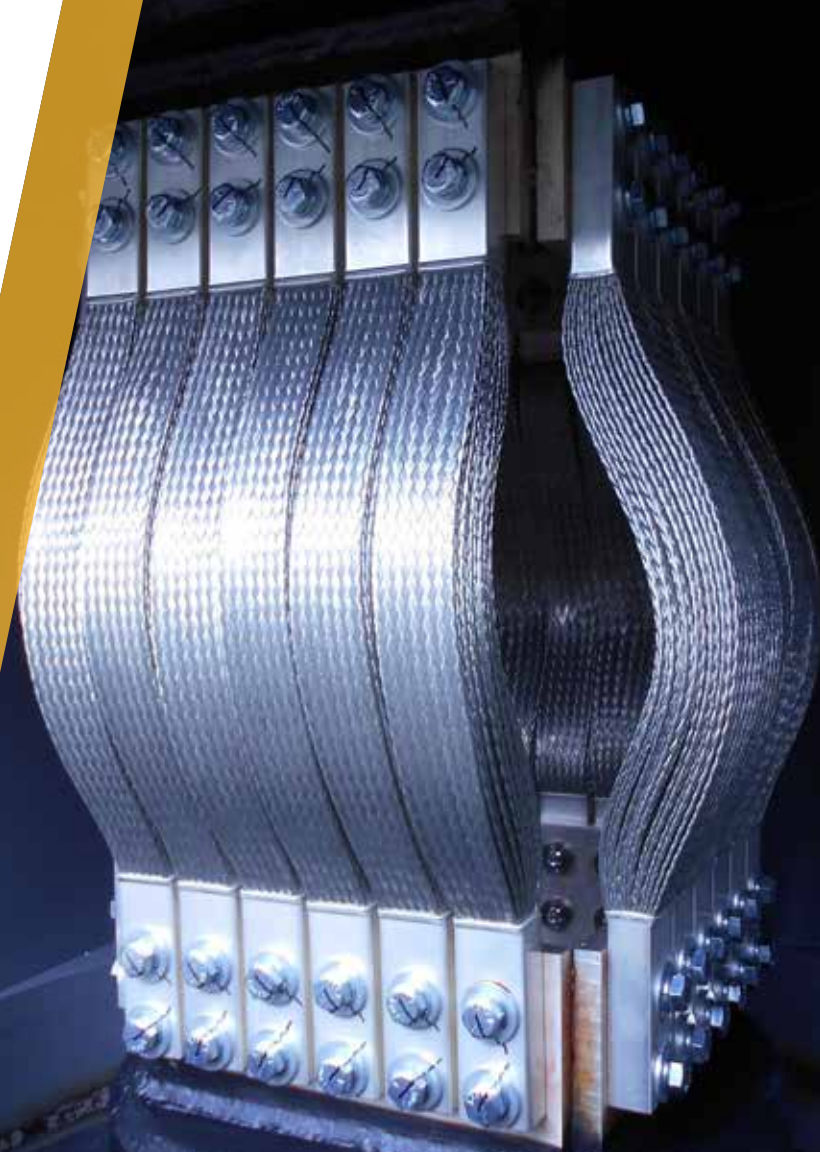




REPLACEMENT PARTS & HARDWARE

TURNKEY SOLUTIONS
INCLUDE:

- Insulators & Support Assemblies
- Obsolete Parts (Bushings, Insulators, Etc.)
- Braided Flex Links
- Refurbishment of Existing Parts
- Replacement Isolation
- GPO3 / G10 & Hardware
- Gasket Material
- Gen & GSU LV Bushing/Neutral
- Boxes & Isolation
- & More

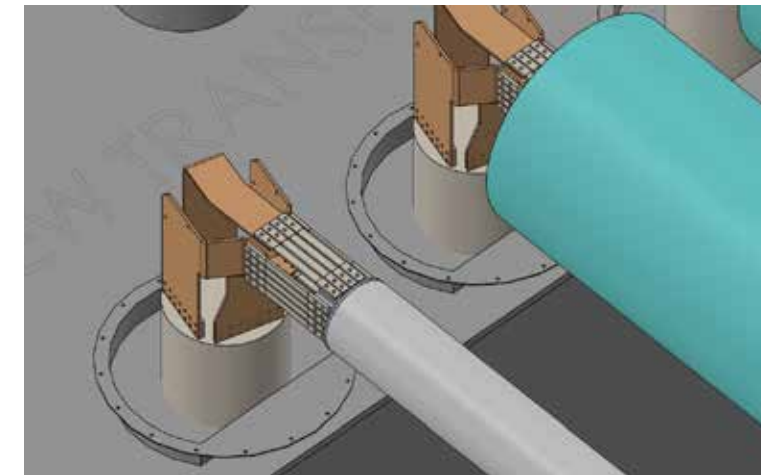
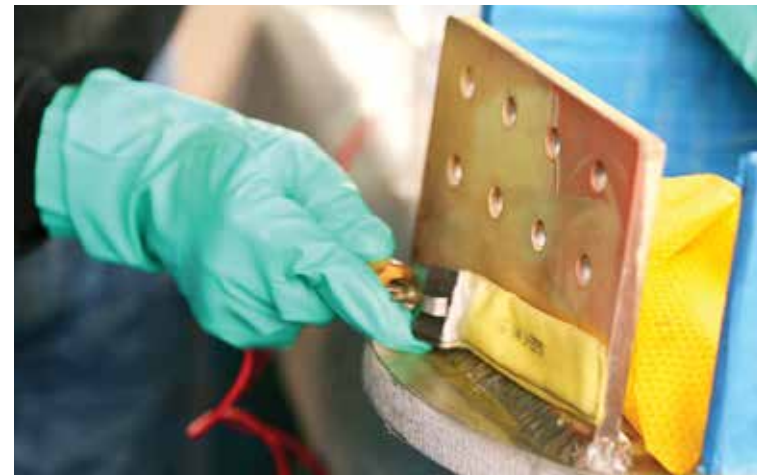




OTHER SERVICES

TURNKEY SOLUTIONS INCLUDE:

- Specialty Welding (IPB, Copper, Aluminum, Stainless, Carbon Steel, etc.)
- Consulting, Design, 3D Modeling & Project Planning
- On-Location Silver Plating
- Gas Insulated Bus (GIB)
- Offline Robotic Video & Borescope Inspection
- Testing (Thermal Imaging, AC/DC Hi-Pot, Online Continuous Monitoring, Noninvasive System Diagnostics, Megger, Tan Delta, DLRO, FLF, Gen CT, etc.)
- Electrical General Contractor
- Fiber Optics
- Substation Mobile Welding





WHAT OUR CLIENTS HAVE TO SAY...

“ Job was completed ahead of schedule. Crew worked well with plant staff. Crew was excellent and required no supervision. Quality of work was very good. All craft took pride in their work. The crew was very efficient and completed the job ahead of schedule. All crew members were very professional, and workmanship was great. Foreman had a good plan and executed it perfectly. Prior to starting any task, the crew made sure they understood plant safety protocol. Foreman and his crew worked well together; we are very happy with final product. EBI's strongest asset was the team's communication and flexibility. ”

Trenton S. ~ Electrical Engineer

Find more reviews and case studies on our website at:
www.ElectricalBuilders.com